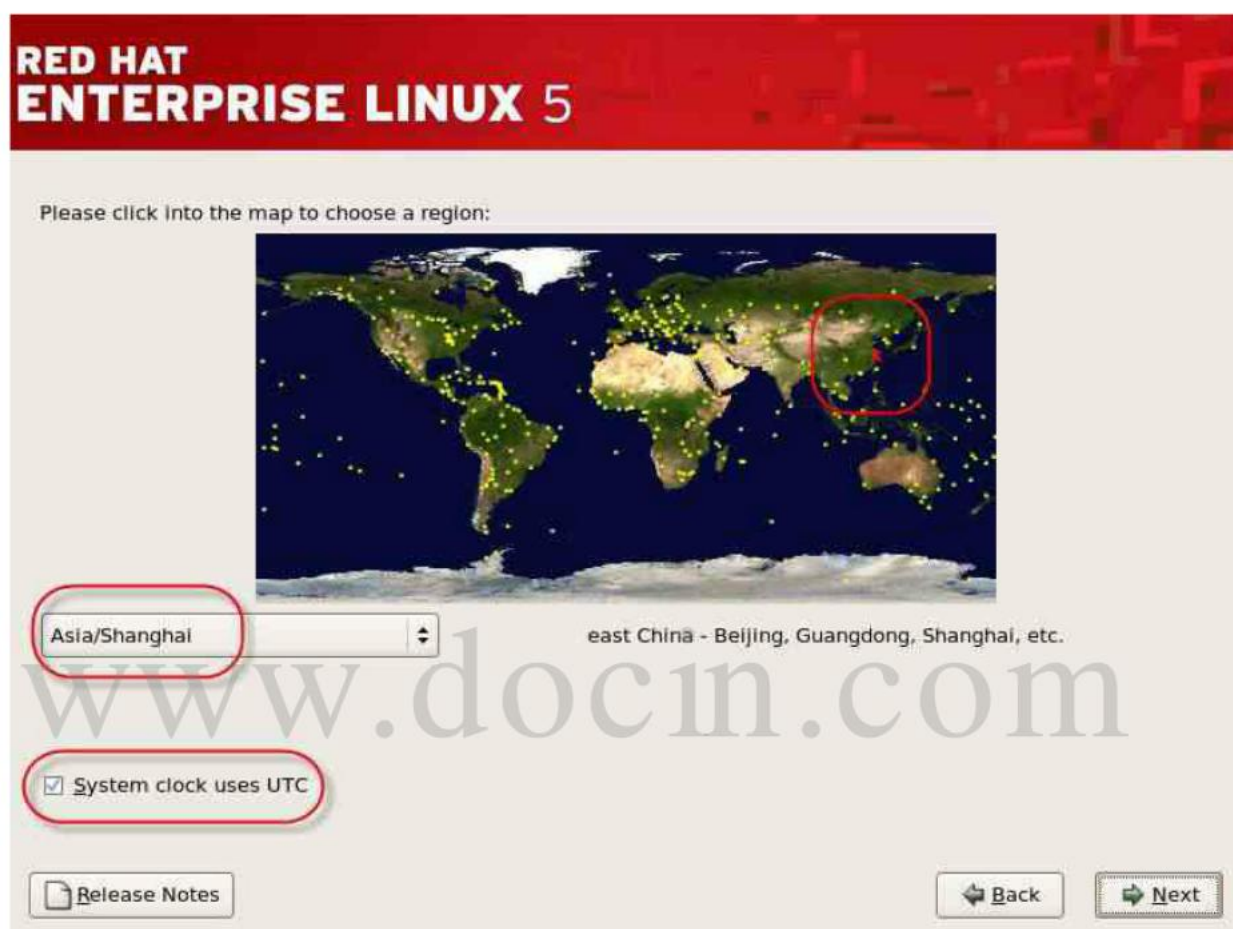


# 操作系统安装

## 1.1 操作系统安装第二部分

指定系统时区



设置 root 密码

# RED HAT ENTERPRISE LINUX 5




The root account is used for administering the system. Enter a password for the root user.

Root Password:

Confirm:



 [Release Notes](#)

 [Back](#)

 [Next](#)

选择需要安装的文件包

www.docin.com

# RED HAT ENTERPRISE LINUX 5


The default installation of Red Hat Enterprise Linux Server includes a set of software applicable for general internet usage. What additional tasks would you like your system to include support for?


- Clustering
- Software Development
- Storage Clustering
- Virtualization
- Web server

You can further customize the software selection now, or after install via the software management application.

- Customize later
- Customize now

 [Release Notes](#)

 [Back](#)

 [Next](#)

www.docin.com

# RED HAT ENTERPRISE LINUX 5

Desktop Environments	<input type="checkbox"/>	Development Libraries
Applications	<input type="checkbox"/>	Development Tools
<b>Development</b>	<input checked="" type="checkbox"/>	GNOME Software Development
Servers	<input type="checkbox"/>	Java Development
Base System	<input type="checkbox"/>	KDE Software Development
Cluster Storage	<input type="checkbox"/>	Legacy Software Development
Clustering	<input type="checkbox"/>	Ruby
Virtualization	<input type="checkbox"/>	<b>X Software Development</b>

These packages allow you to develop applications for the X Window System.

35 of 43 optional packages selected

Optional packages

Release Notes

Back

Next

选中“MySQL Database”，然后点击“Optional packages”

www.docin.com

# RED HAT ENTERPRISE LINUX 5

Desktop Environments  
Applications  
Development  
**Servers**  
Base System  
Cluster Storage  
Clustering  
Virtualization

- DNS Name Server
- FTP Server
- Legacy Network Server
- Mail Server
- MySQL Database
- Network Servers
- News Server
- PostgreSQL Database

This package group contains packages useful for use with MySQL.

6 of 11 optional packages selected

Optional packages

Release Notes

Back

Next

# RED HAT ENTERPRISE LINUX 5

Some packages associated with this group are not required to be installed but may provide additional functionality. Please choose the packages which you would like to have installed.

- MySQL-python - 1.2.1-1.x86\_64 - An interface to MySQL.
- libdbi-odb-mysql - 0.8.1a-1.2.2.x86\_64 - MySQL plugin for libdbi
- mod\_auth\_mysql - 1:3.0.0-3.1.x86\_64 - Basic authentication for the Apache
- mysql-bench - 5.0.22-2.1.0.1.x86\_64 - MySQL benchmark scripts and data
- mysql-connector-odbc - 3.51.12-2.2.x86\_64 - ODBC driver for MySQL
- mysql-devel - 5.0.22-2.1.0.1.x86\_64 - Files for development of MySQL
- mysql-server - 5.0.22-2.1.0.1.x86\_64 - The MySQL server and related files.

默认没有选上, 必须手工选上

Optional packages

Release Notes

Back

Next

# RED HAT ENTERPRISE LINUX 5

**Desktop Environments**  
**Applications**  
**Development**  
**Servers**  
**Base System**  
**Cluster Storage**  
**Clustering**  
**Virtualization**

- Administration Tools
- Base
- Dialup Networking Support
- Java
- Legacy Software Support
- System Tools
- X Window System

This group is a collection of various tools for the system, such as the client for connecting to SMB shares and tools to monitor network traffic.

12 of 45 optional packages selected

Optional packages

Release Notes

Back

Next

选择“Chinese Support”

**Desktop Environments**  
**Applications**  
**Development**  
**Servers**  
**Base System**  
**Languages**

- Bengali Support
- Brazilian Portuguese Support
- Breton Support
- British Support
- Bulgarian Support
- Catalan Support
- Chinese Support
- Croatian Support

Chinese Support

4 of 6 optional packages selected

Optional packages

Release Notes

Back

Next

手工选上中文支持

# RED HAT ENTERPRISE LINUX 5



点击“Next”，开始系统安装。

www.docin.com

# RED HAT ENTERPRISE LINUX 5




Click next to begin  
Installation of Red Hat  
Enterprise Linux Server.

A complete log of the  
Installation can be found in  
the file `'/root/install.log'`  
after rebooting your system.

A kickstart file containing  
the Installation options  
selected can be found in the  
file `'/root/anaconda-ks.cfg'`  
after rebooting the system.

 Release Notes

 Back

 Next

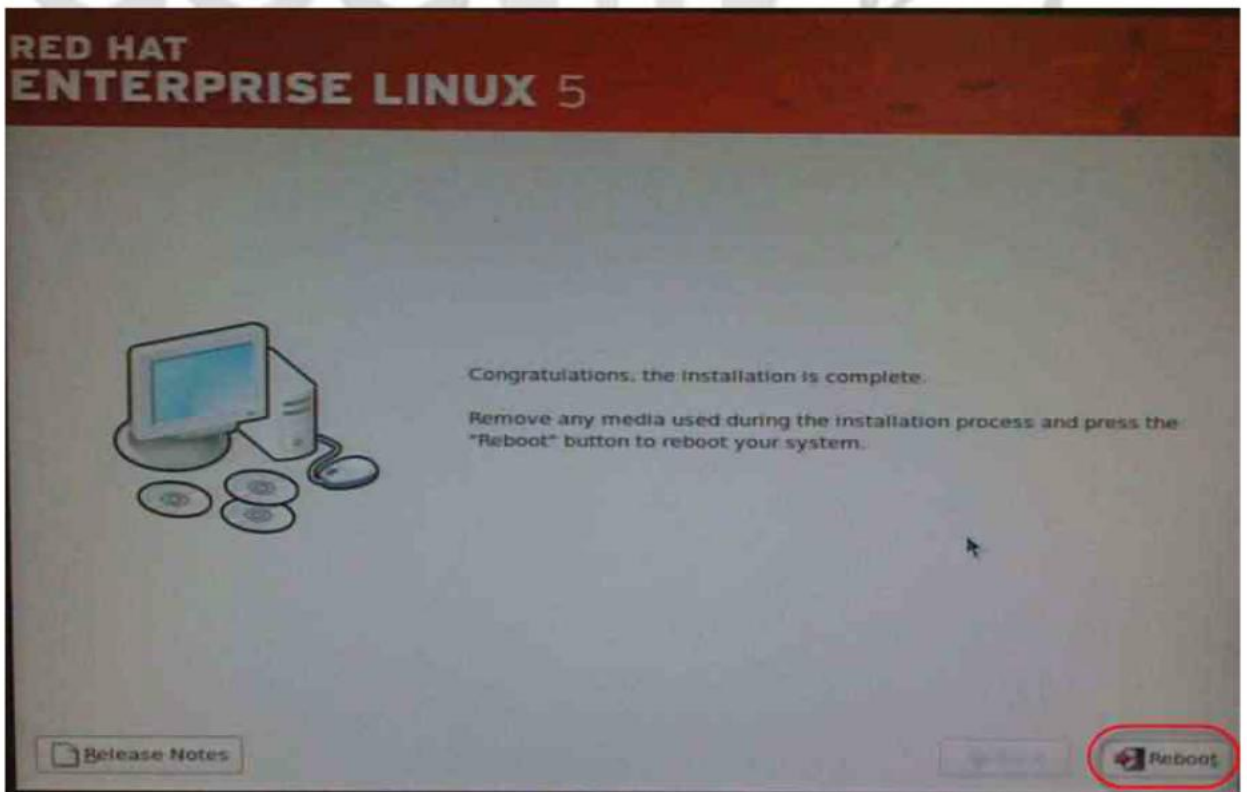
系统开始往硬盘上进行安装

www.docin.com

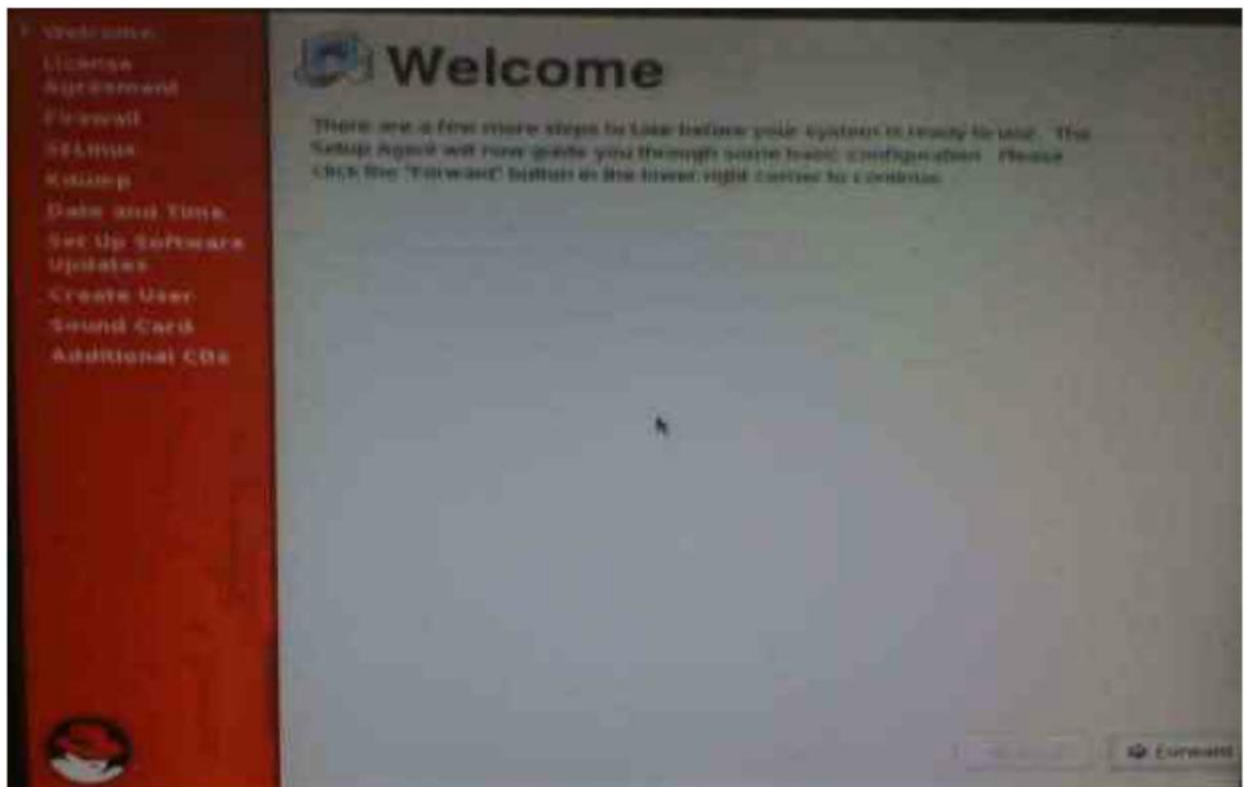




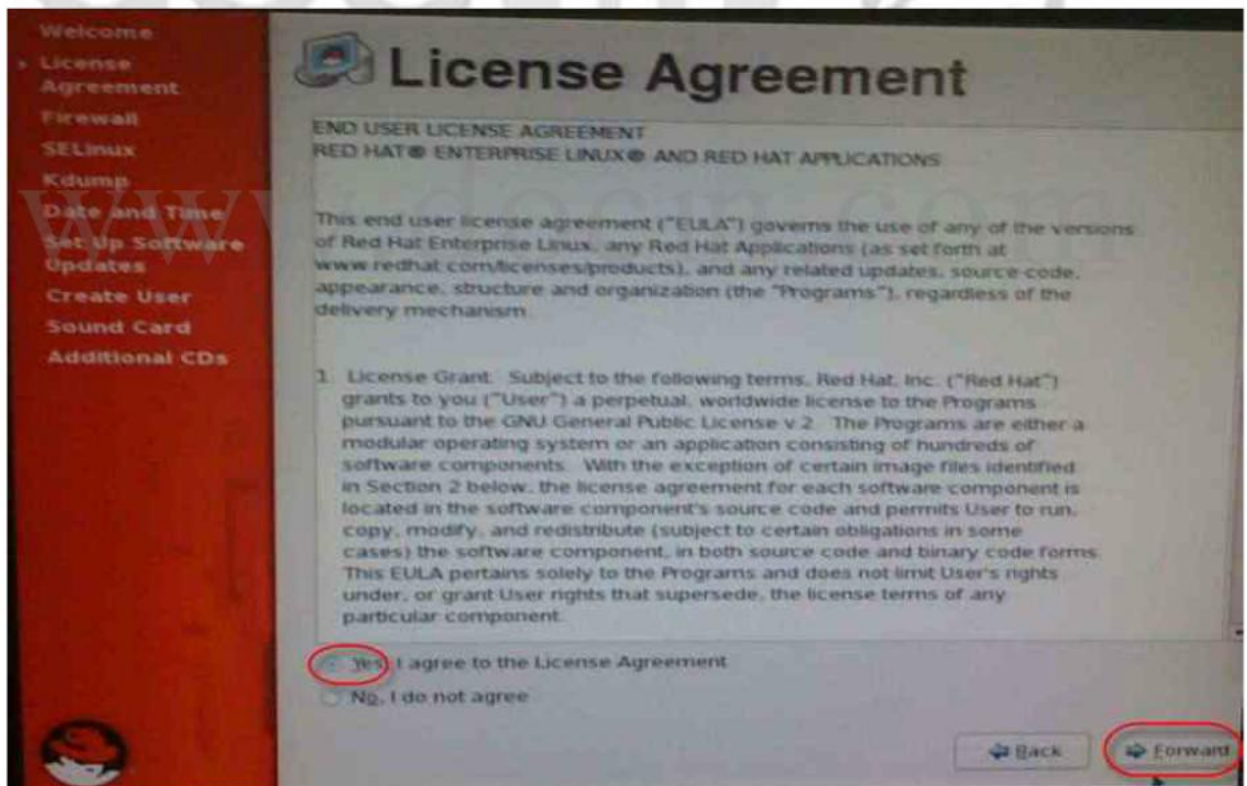
当至如下图，选择“reboot”，重启系统。



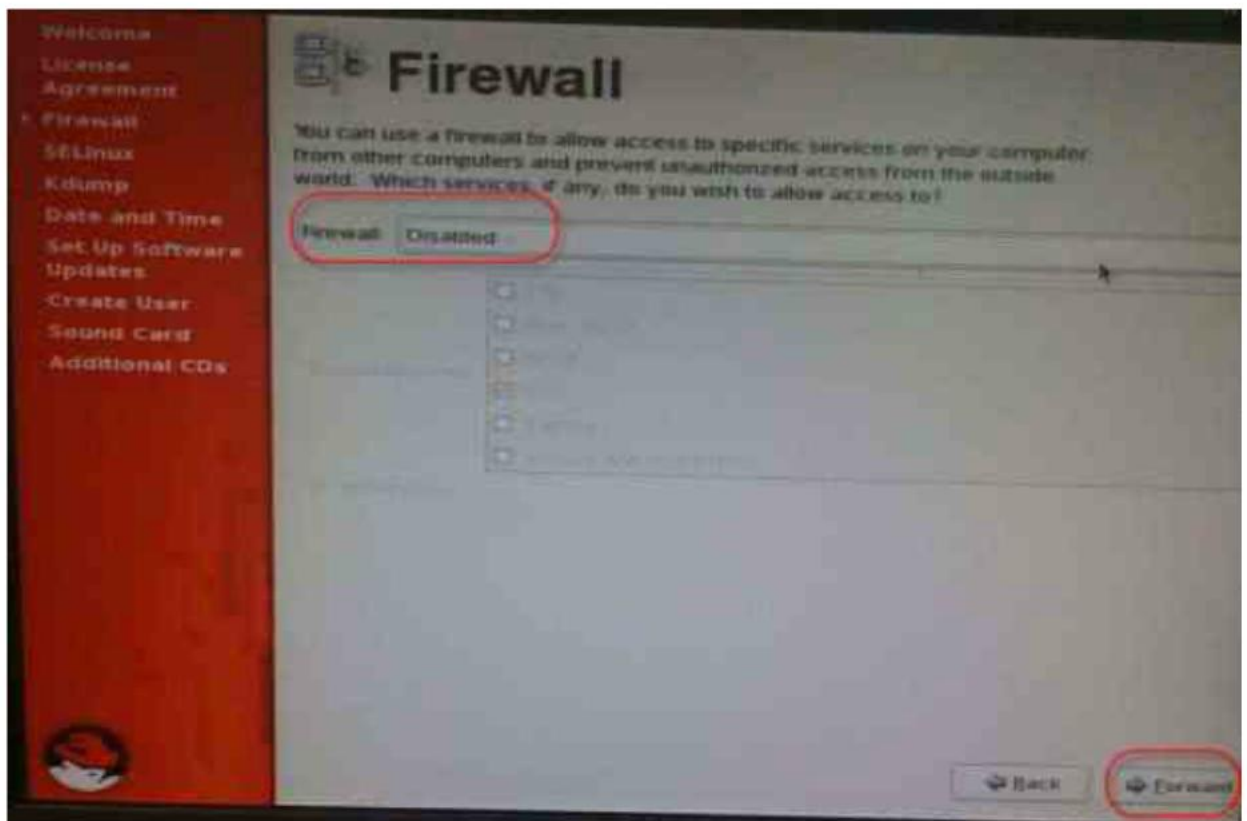
当系统启动如下界面，点击“Forward”



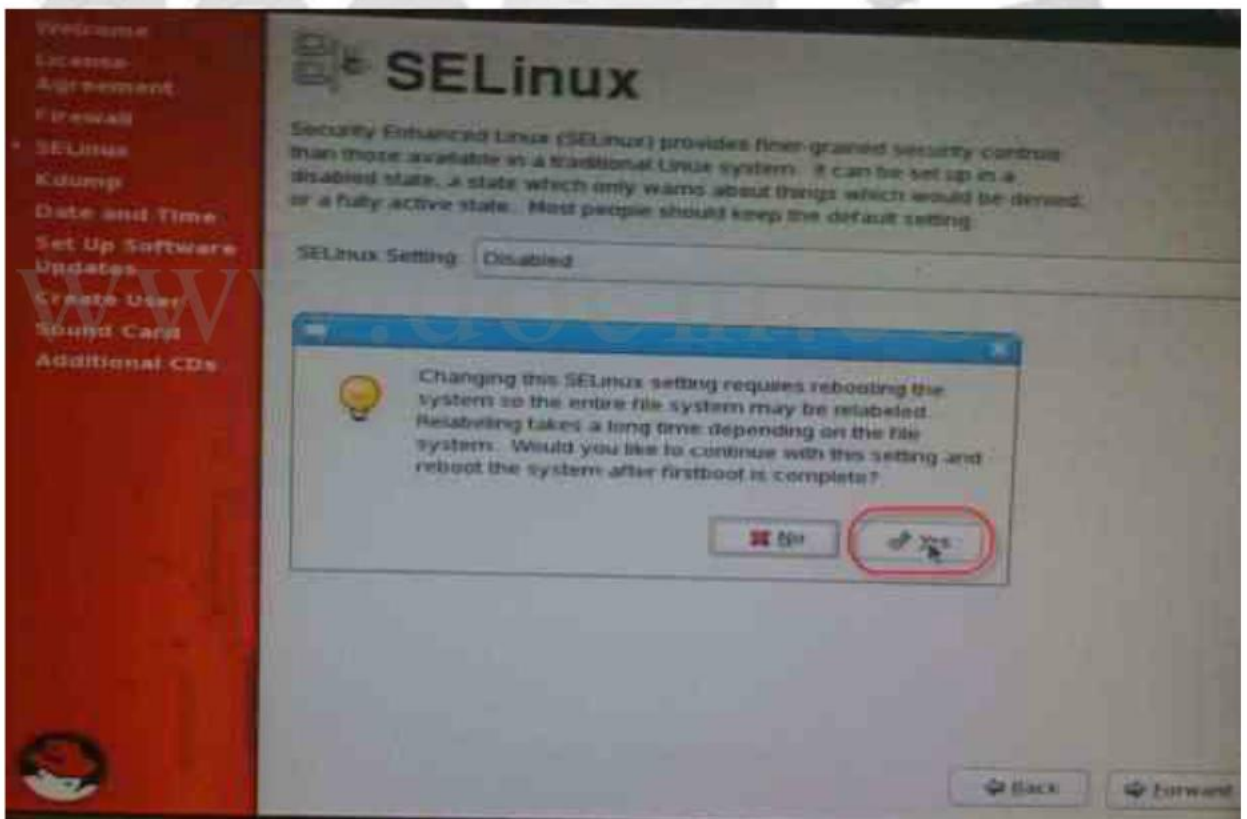
点击“Forward”



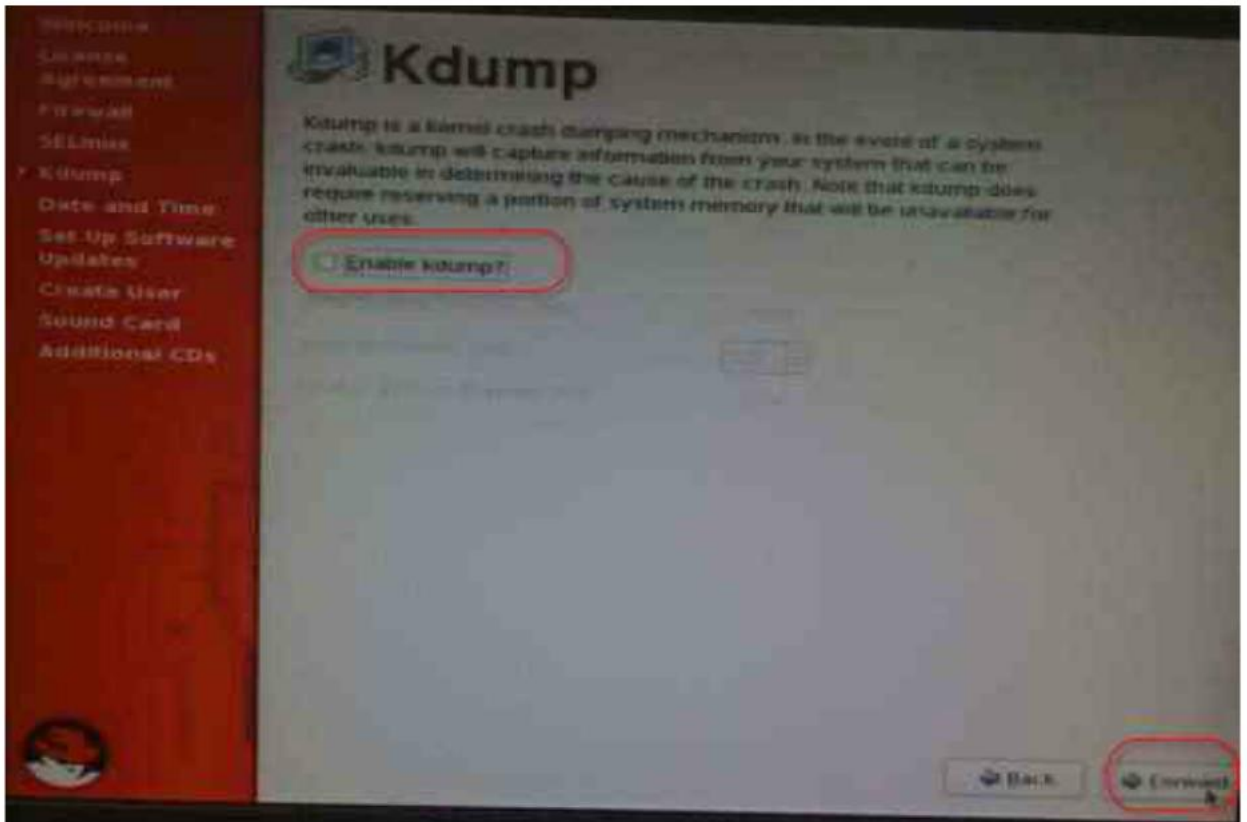
关闭 iptables



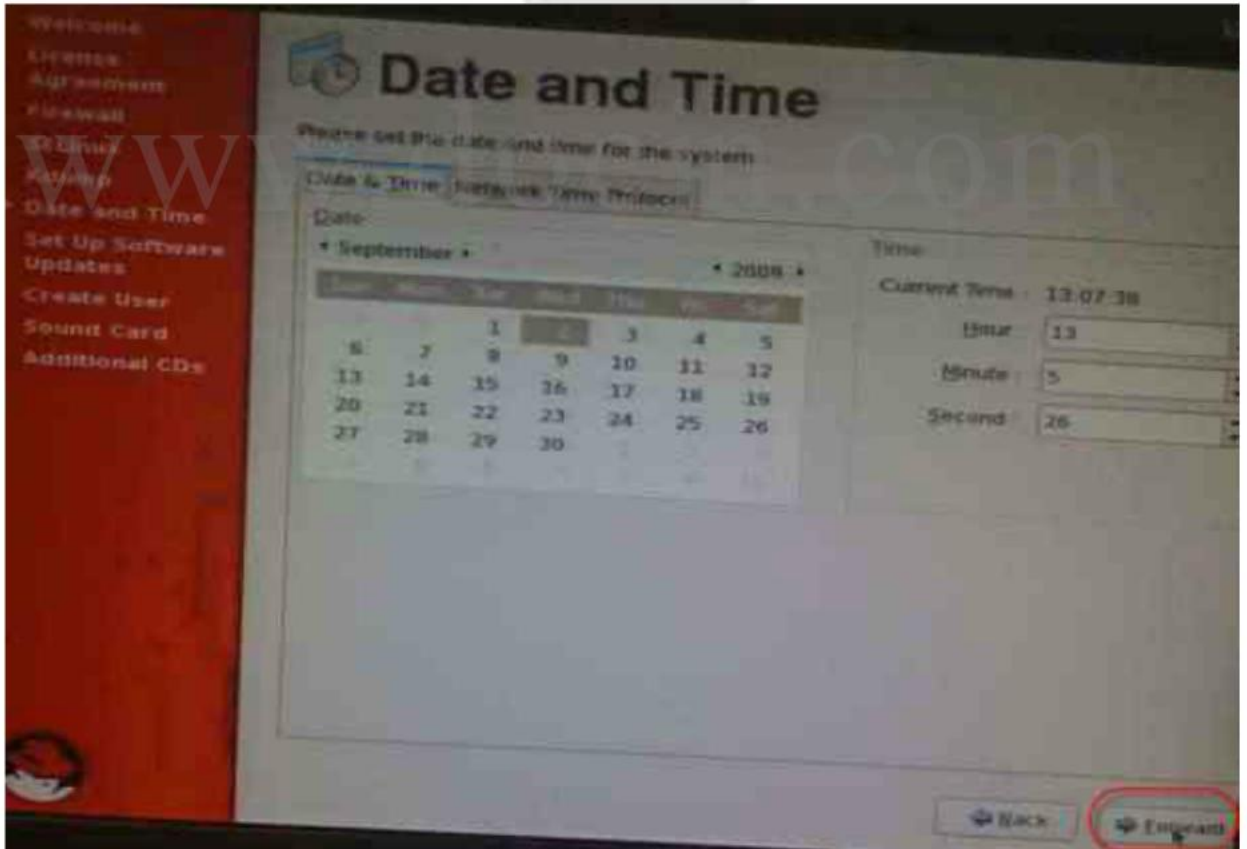
关闭 SELinux



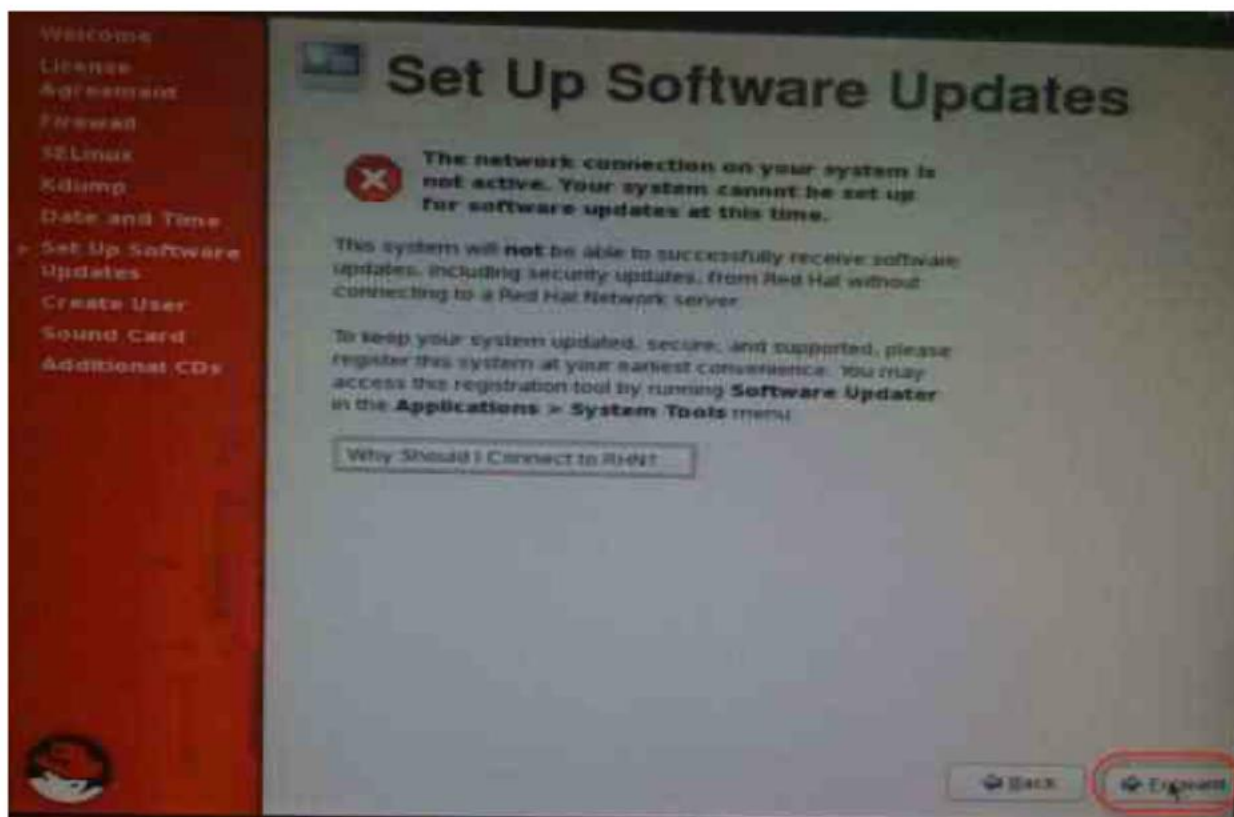
不启动 kdump



设置系统时间

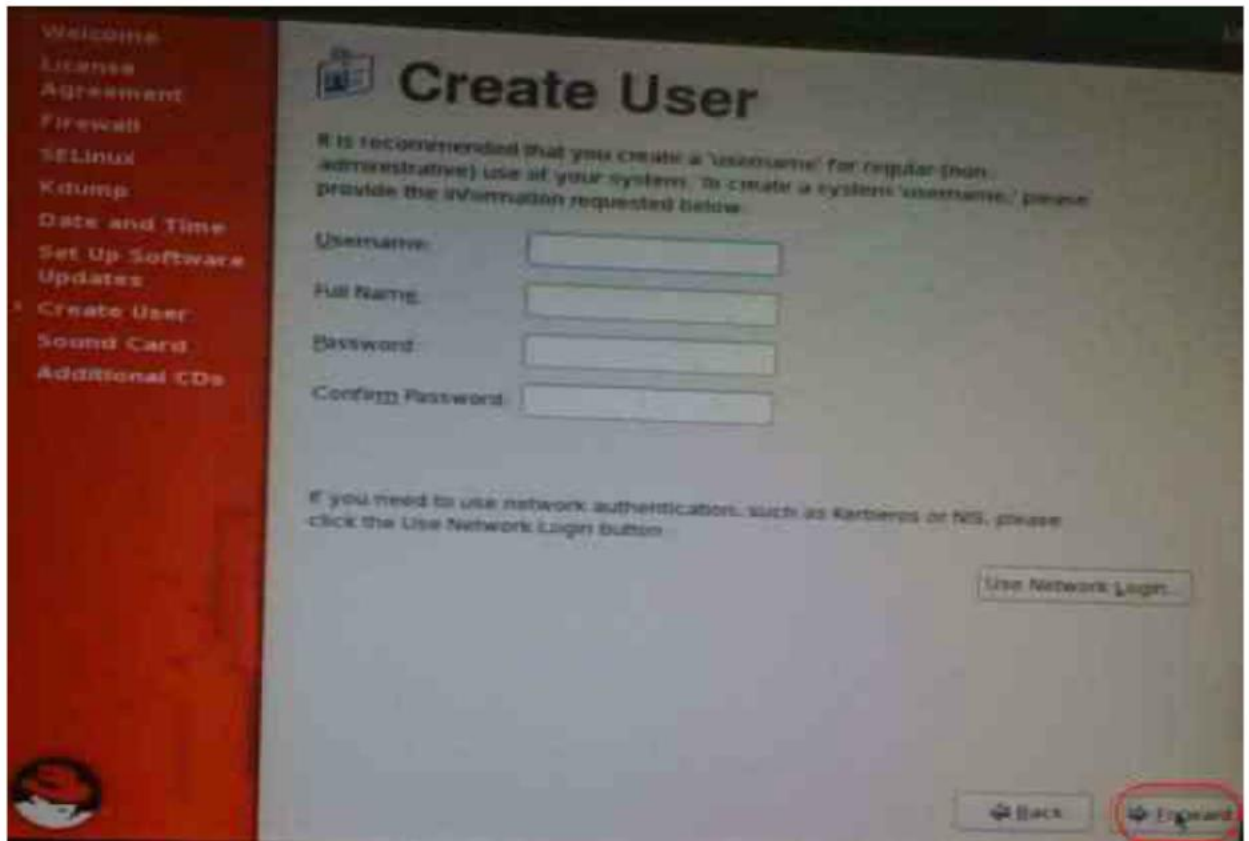


点击“Forward”

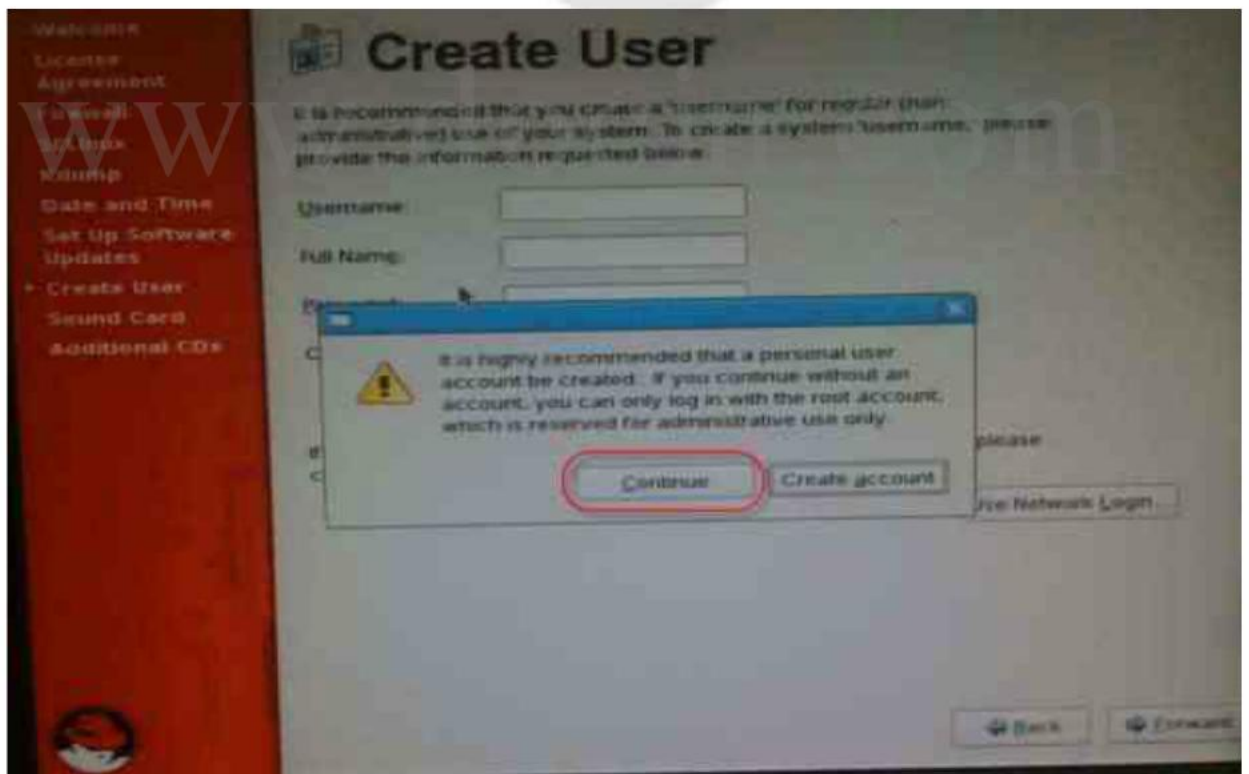


点击“Forward”

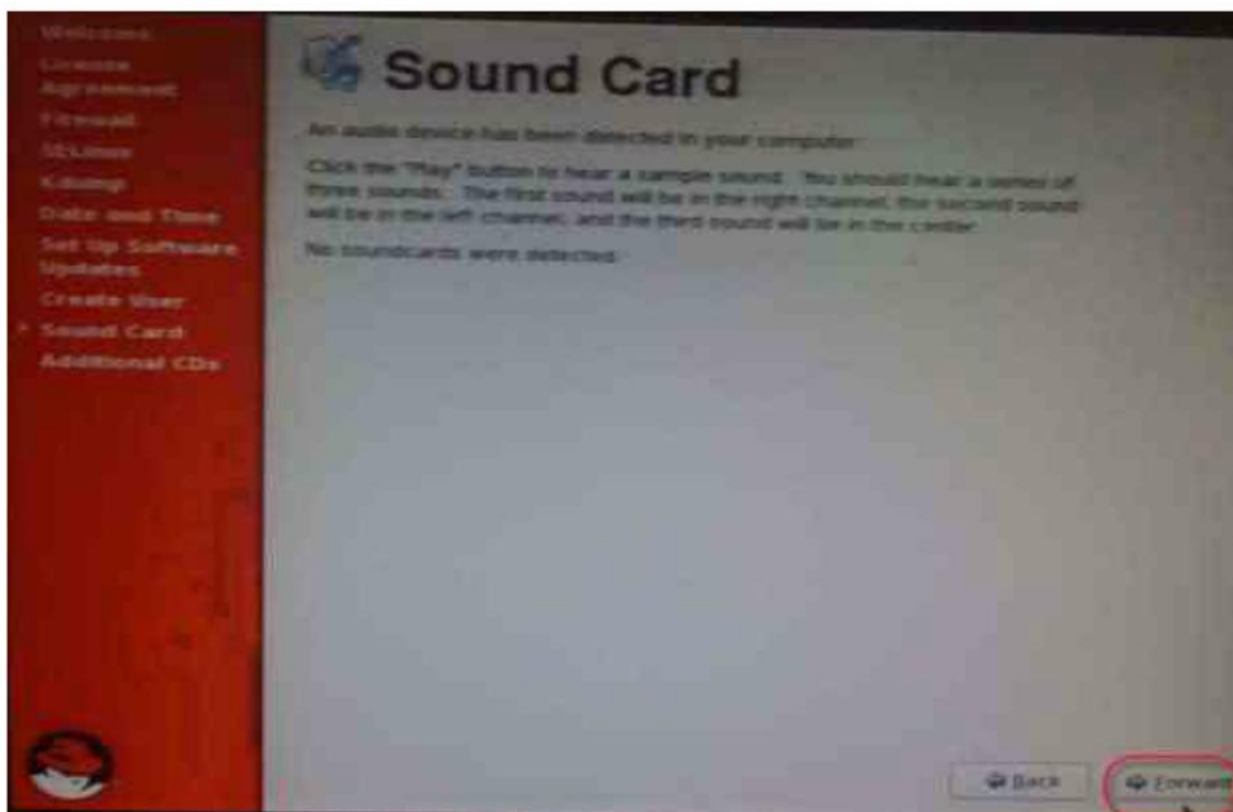
www.docin.com



不创建用户



点击“Forward”

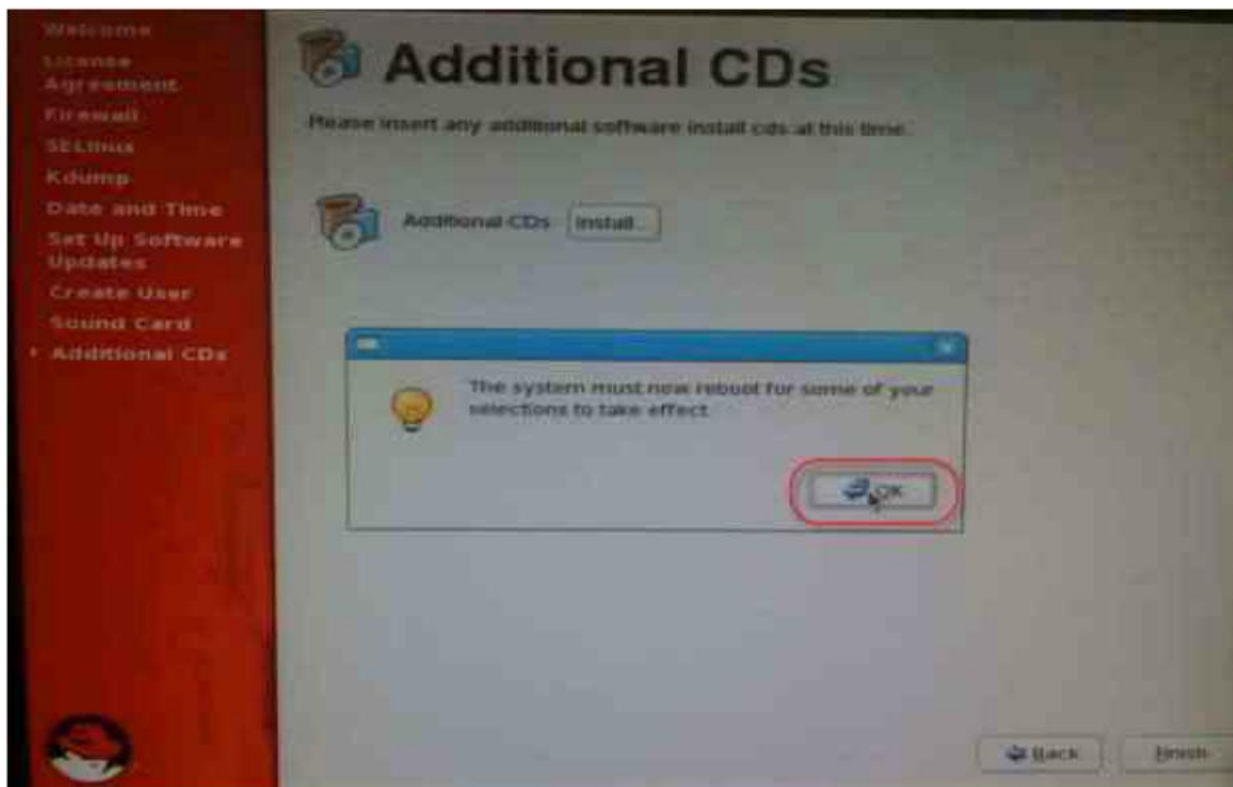


点击“Finish”





点击“OK”，重启系统，完成系统安装。



www.docin.com