

# 操作系统安装

## 1.1 操作系统安装第一部分

按下系统电源按钮，启动系统，同时将系统安装光盘放入光驱。

系统启动到如下界面，按回车，开始进行系统安装。



选择“Skip”，回车

Welcome to Red Hat Enterprise Linux Server

**CD Found**

To begin testing the CD media before installation press OK.

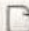
Choose Skip to skip the media test and start the installation.


<Tab>/<Alt-Tab> between elements | <Space> selects | <F12> next screen

选择“Next”，回车

**RED HAT  
ENTERPRISE LINUX 5**



 [Release Notes](#)

 [Back](#)

 [Next](#)

选择 English (English) ， 点击 “Next”

## RED HAT ENTERPRISE LINUX 5



What language would you like to use during the installation process?

Chinese(Simplified) (简体中文)  
Chinese(Traditional) (繁體中文)  
Croatian (Hrvatski)  
Czech (Čeština)  
Danish (Dansk)  
Dutch (Nederlands)  
English (English)  
Estonian (eesti keel)  
Finnish (suomi)  
French (Français)  
German (Deutsch)  
Greek (Ελληνικά)  
Gujarati (ગુજરાતી)

Release Notes

Back

Next

选择 “U.S. English” ， 点 “Next”  
www.docin.com

# RED HAT ENTERPRISE LINUX 5



Select the appropriate keyboard for the system.

- Slovenian
- Spanish
- Swedish
- Swiss French
- Swiss French (latin1)
- Swiss German
- Swiss German (latin1)
- Tamil (Inscript)
- Tamil (Typewriter)
- Turkish
- U.S. English**
- U.S. International
- Ukrainian
- United Kingdom

[Release Notes](#)

[Back](#)

[Next](#)

输入安装号，该安装号在 Redhat 的信封里面。

www.docin.com

# RED HAT ENTERPRISE LINUX 5



Select the appropriate keyboard for the system.

Slovenian

Spanish

Swedish

Swiss French

Swiss French (latin1)

Swiss German

Swiss German (latin1)

Tamil (Inscript)

Tamil (Typewriter)

Turkish

U.S. English

U.S. International

Ukrainian

United Kingdom

## Installation Number

To install the full set of supported packages included in your subscription, please enter your Installation Number

Installation Number:

Skip entering Installation Number

选择“Yes”

www.docin.com

# RED HAT ENTERPRISE LINUX 5



Select the appropriate keyboard for the system.

Slovenian  
Spanish  
Swedish  
Swiss French  
Swiss French (latin1)  
Swiss German  
Swiss German (latin)  
Tamil (Inscript)  
Tamil (Typewriter)  
Turkish  
U.S. English  
U.S. International  
Ukrainian  
United Kingdom


**Warning**

 The partition table on device sda was unreadable. To create new partitions it must be initialized, causing the loss of ALL DATA on this drive.

This operation will override any previous installation choices about which drives to ignore.

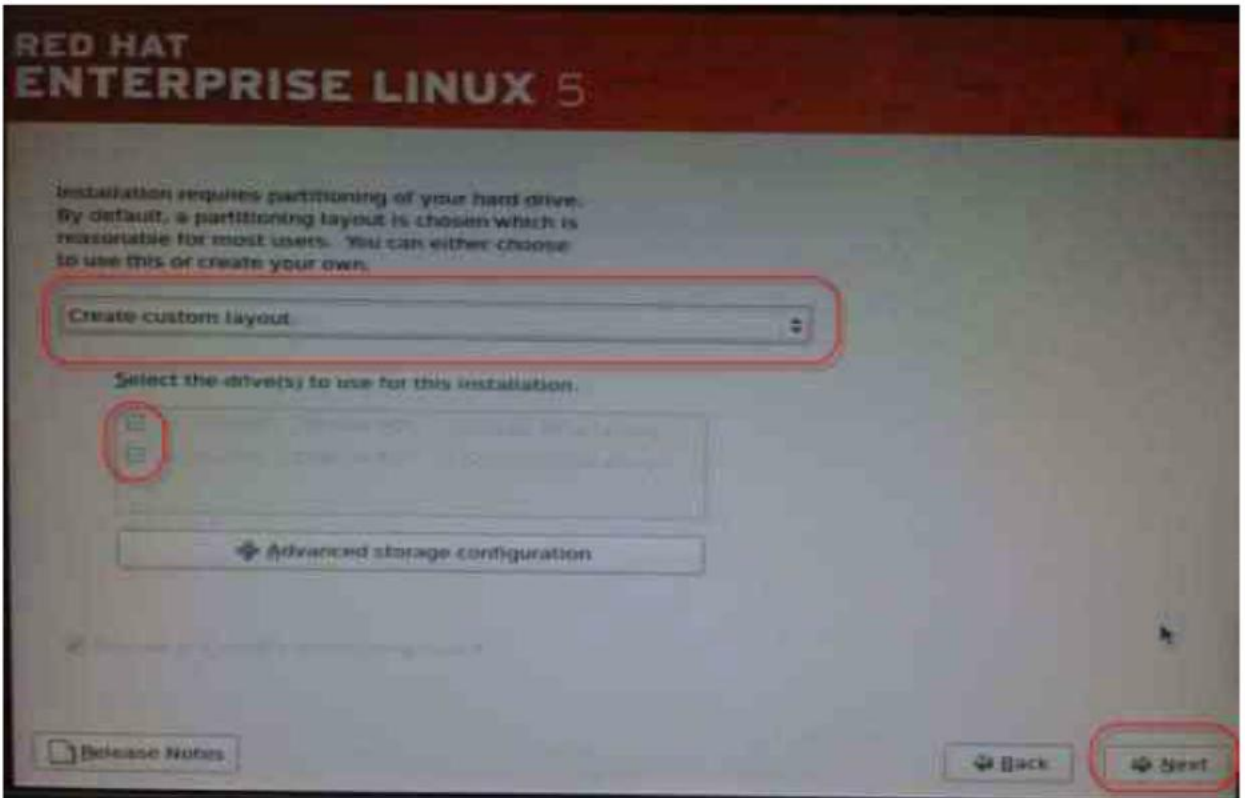
Would you like to initialize this drive, erasing ALL DATA?

No  Yes

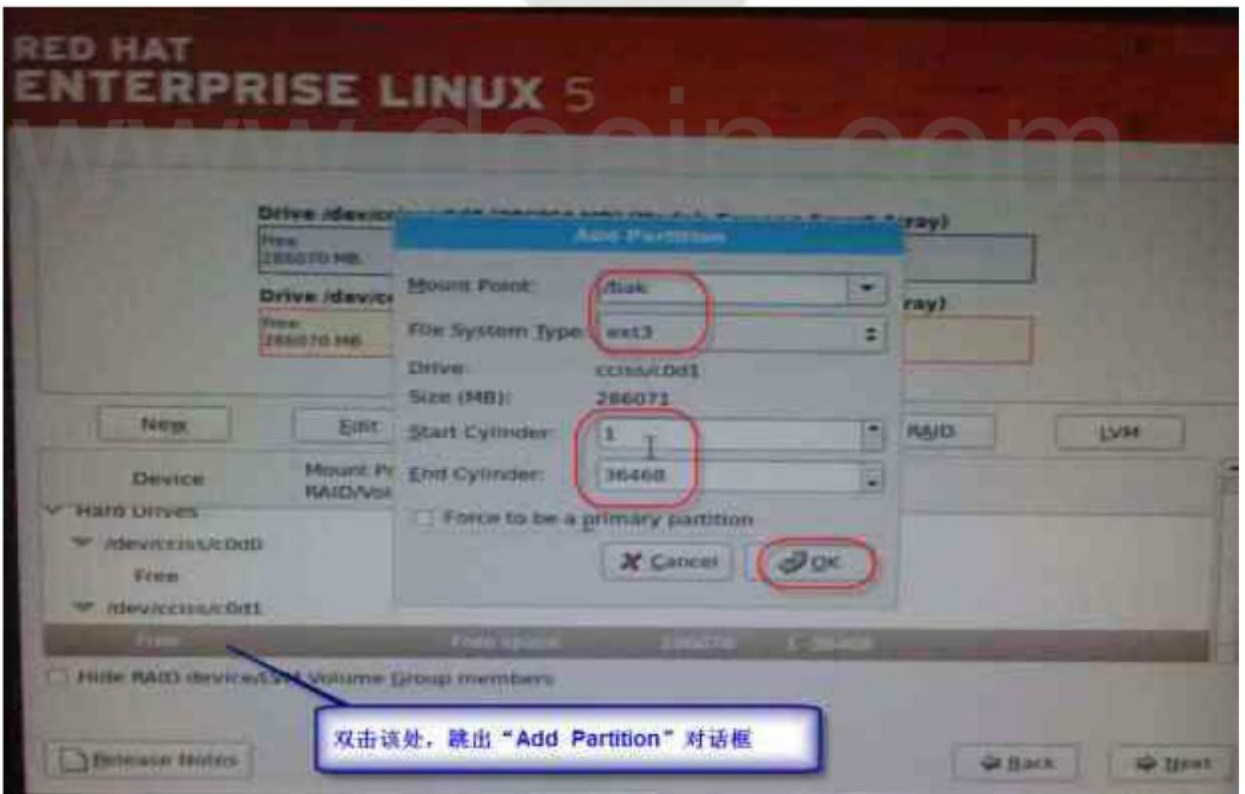
 Release Notes

按如下选择，点“Next”

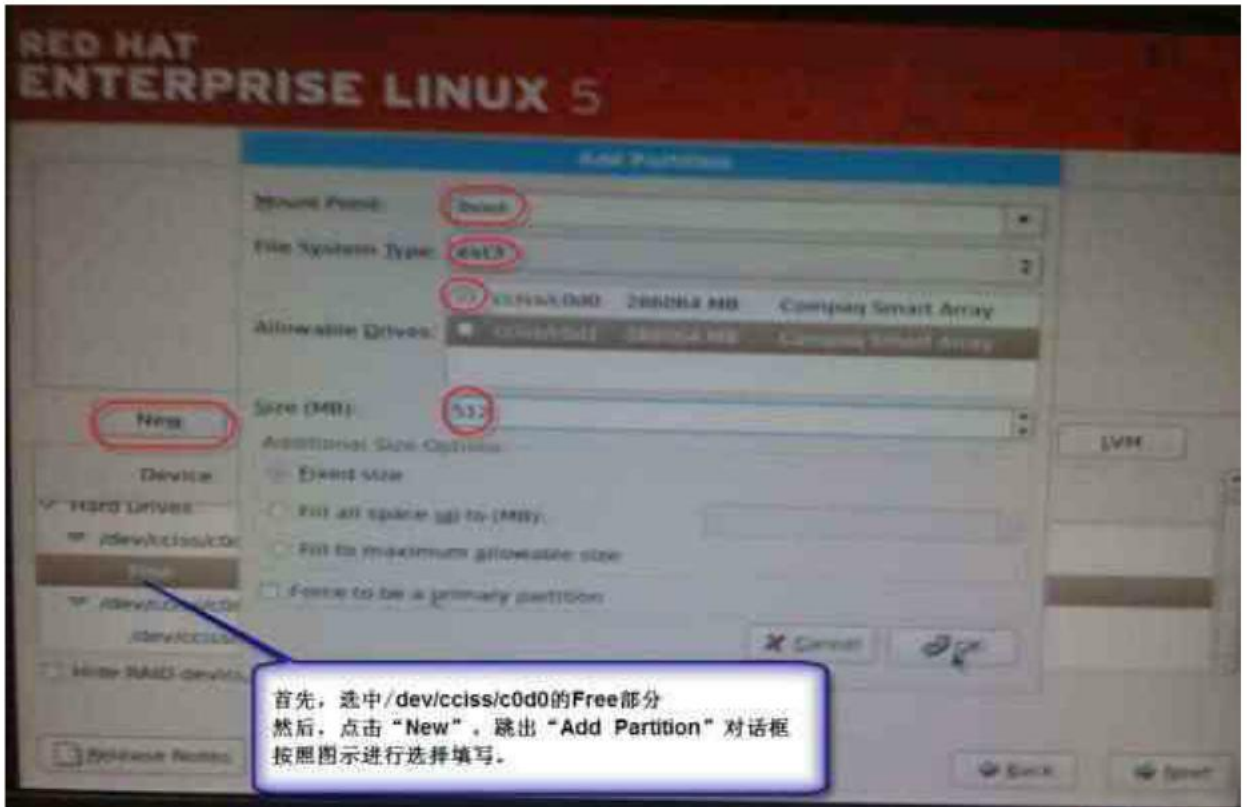
www.docin.com



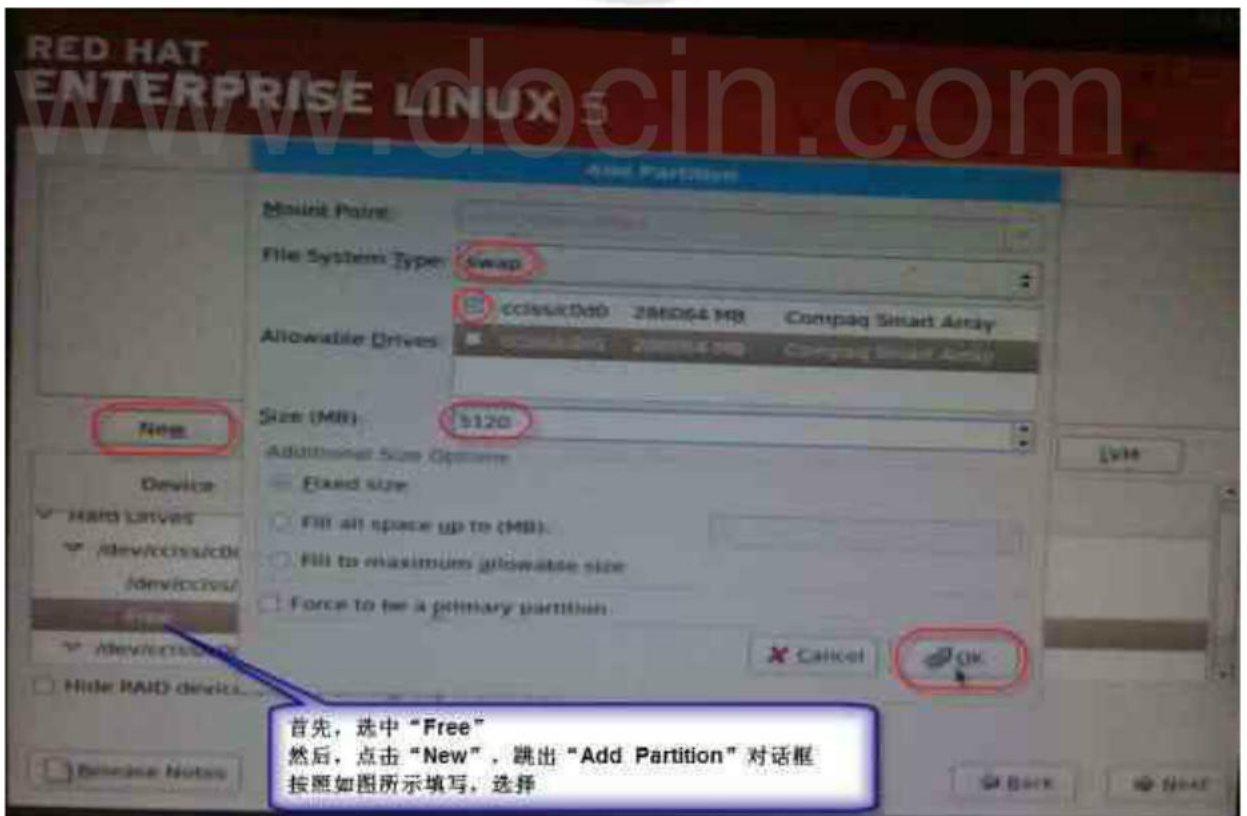
创建/bak, 文件系统



## 创建/boot 文件系统

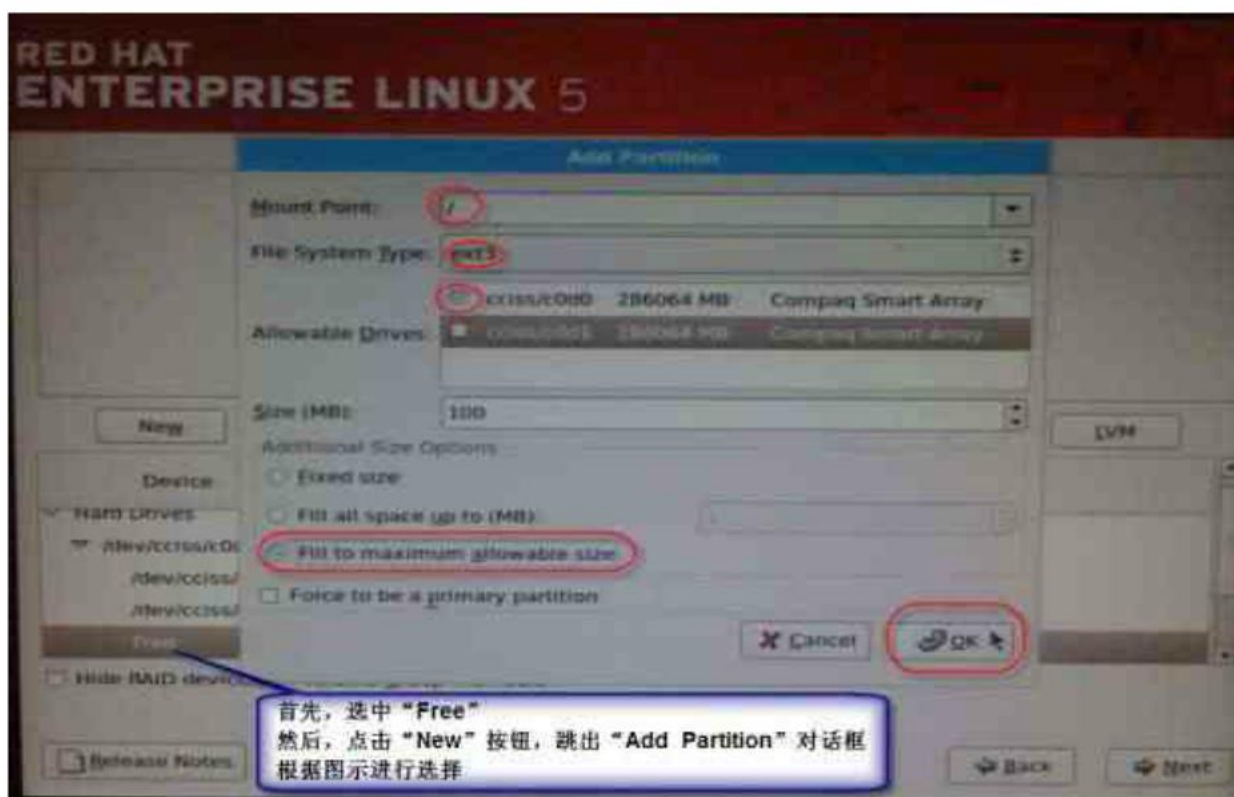


## 创建 Swap 分区



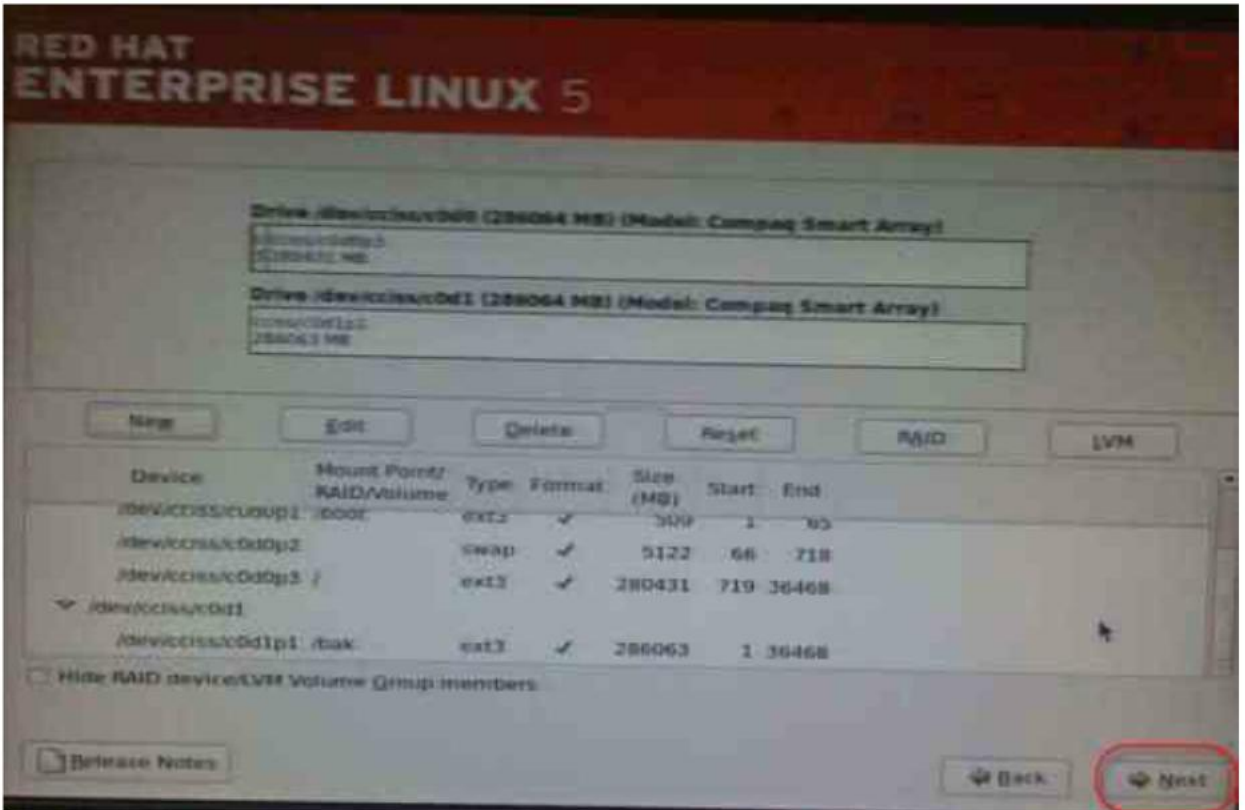


创建/ 文件系统

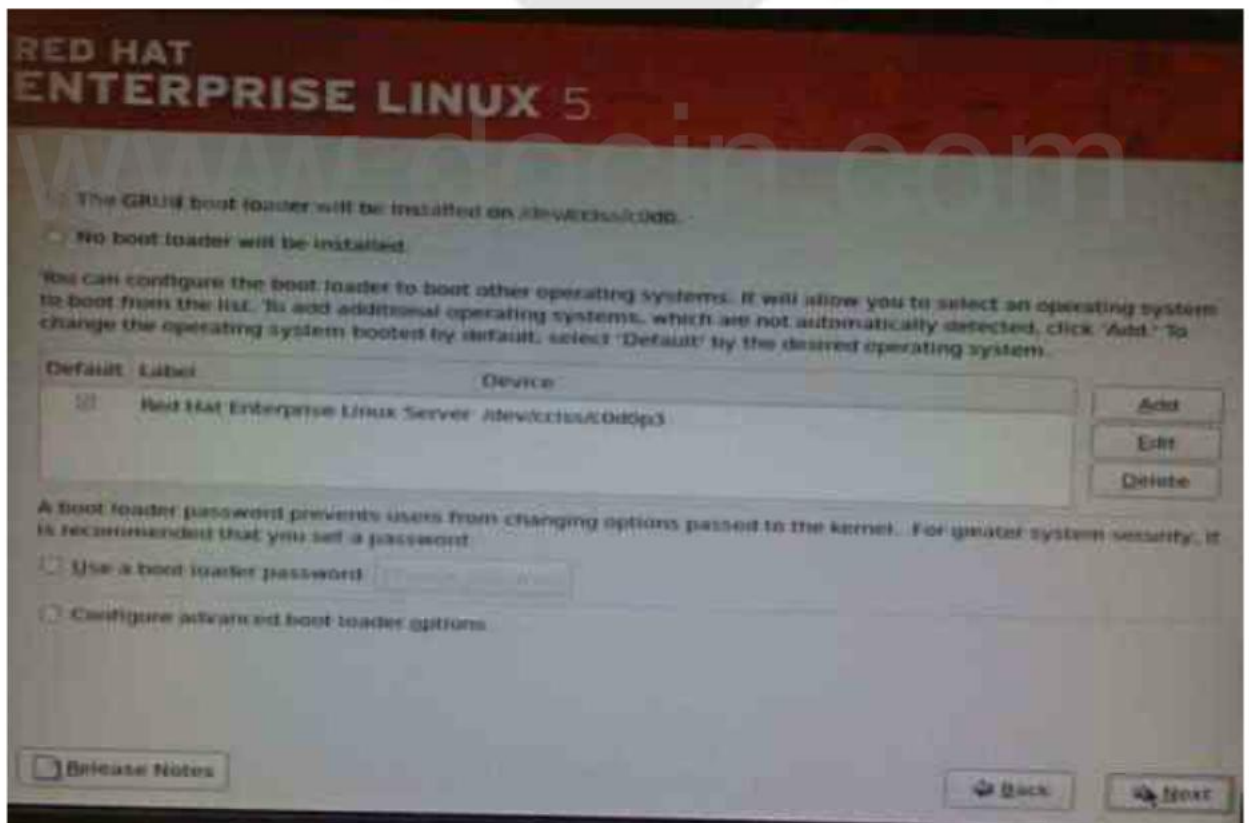


点击“Next”

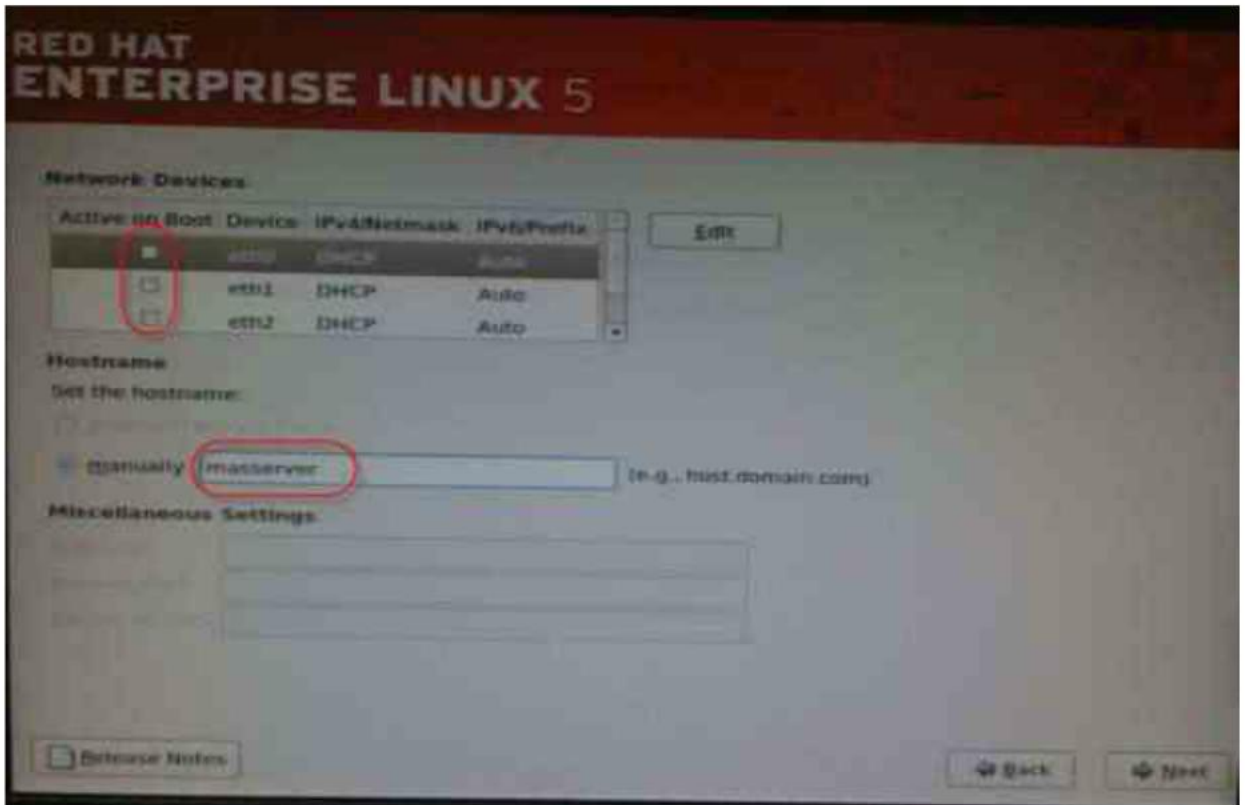
www.docin.com



点击“Next”



配置主机名 “masserver”



点击 “Continue”

